

WILDFLOWERS

OSC's wildflower mixes are reliable, visually appealing blends of attractive, brightly coloured flowering plants. A great habitat for birds, butterflies, bees and other forms of beneficial wildlife. They are ideal for landscaping large areas, on slopes and other areas where a traditional lawn is either hard or expensive to maintain. They perform well under stress and adapt to local environmental and soil conditions.

Wildflower plantings change in composition and overall appearance as time goes by. Some varieties come to predominate over others.

We recommend overseeding established wildflower plantings every three to four years to re-introduce varieties and help keep the landscape looking fresh, vibrant and well balanced.

Time of Planting

Sow wildflower seeds into prepared seedbeds May 15th through June 15th or September through October. Native grasses do best when planted in the fall, between Oct. 15th and Nov. 15th. Late fall sowings additionally stratify the seed. An early spring sowing in April will work but not as effectively. If ideal growing conditions are unavailable, the seed may go dormant and not germinate until spring of the following year.

Site Preparation

Remove weeds by hand or apply an organic non-selective herbicide. Loosen soil to 2.5 cm (1") depth with a stiff rake, cultivator or hoe. Prairie flowers and grasses will germinate and establish themselves much better when planted into a bed of well drained soil, rather than compost or dense compacted topsoil. Broadcast the seed and let mother nature do the rest. Smaller seeds can be mixed with dry sand to improve distribution when sowing. Rain, snow and frost-heaving of the



6960 - *Liatris spicata*

soil will work the seed down into the soil bed. If you choose to do a spring planting, make sure the seed comes into good contact with the soil & irrigate as needed.

Managing Native Grasses and Wildflowers

Many wildflowers will not bloom until the second year of growth. Supplemental fertilizer encourages weeds. During the establishment year, native species plantings must be watered. The next year's growth adapts easily to local climate and soil conditions needing only what nature provides. Mow to 15 cm (6") height after the fall frosts have reduced annual foliage. Consider a controlled burn of prairie species where municipal laws permit. The encroachment of woody or non-prairie vegetation is curtailed by fire allowing the prairie community to thrive.

Special Considerations

A period of cold stratification helps break seed dormancy. Sow seed into planting trays and moisten the medium. Keep at 0C to 4C (32F to 40F) for several weeks, then place into warm area for germination. Stratification naturally works well. Direct seed outdoors in mid to late fall. Avoid storing seed in the refrigerator. Store seed in a cool, dark place indoors. Sow seed as soon as it is practical.



6865 - *Rudbeckia* BLACK EYED SUSAN

OUR FAVOURITE WILDFLOWER

RUDBECKIA

3700 seeds/g

This robust perennial will turn heads wherever planted and withstand more heat and drought than most. Sow outdoors September through October or start indoors Feb to Mar 1st for bloom the first season. Select a site in full sun with good air circulation. Germinates at 20C/70F in 14 to 21 days. Zone 3.

6865 – BLACK EYED SUSAN

Our favourite summer perennial blooms July through September. An Ontario native plant. Golden yellow blooms with dark centres. Easy to grow--adaptable to most soils, trouble free and tolerant of heat and drought. Blooms well in full sun or light shade. Height 60-90cm (2-3')



SOWING RATES

Wildflower Mixes	125 g/90 m ²	9.5 kg/ha (9 lbs/ac)
Native Grasses	250 g/90 m ²	25 kg/ha (23 lbs/ac)
Wildflower & Grass Mixes	250 g/90 m ²	25 kg/ha (23 lbs/ac)



6823 - BEE POLLINATOR MIX



6800 - Wildflower
BENEFICIAL INSECT MIX



6805 - BUTTERFLY MIX



6810 - COTTAGE COUNTRY



6815 - Wildflower DEER
RESISTANT MIX

6800 - BENEFICIAL INSECT MIX

Nature is filled with crawling and flying insects that thrive on many of the pests that ravage desirable plants. This new specialty mix will attract Lacewings, Ladybugs, Syrphid Flies, Parasitic Mini-Wasps, Tachinid Flies, Minute Pirate Bug, Soldier and Ground Beetles. A blend of self-seeding annuals and perennials.

Contains: Alfalfa, Perennial Alyssum, White Alyssum, Alpine Aster, Lemon Balm, Wild Bergamot, Black Eyed Susan, Buckwheat, Butterfly Weed, Caraway, Coriander, Cosmos Sensation White, Evening Primrose, Gloriosa Daisy, Canada Golden Rod, Dill, Florence Fennel, Poached Egg Flower, Statice, Prairie Sunflower, Rocky Mountain Pentstemon, Yarrow & Zinnia Lilliput.

6805 - BUTTERFLY MIX

A great assortment of violets, blues, oranges, red and white all very attractive to butterflies. Garden height averages 60cm (2').

Contains: Alyssum, African Daisy, Bachelor Buttons, Butterfly Weed, Candytuft, Catch Fly, Columbine, Purple Coneflower, Prairie Coneflower, Plains Coreopsis, Lance Leaf Coreopsis, Cosmos, Scarlet Flax, Siberian Wallflower.

6810 - COTTAGE COUNTRY MIX

For those who want the beauty of native wildflowers to envelop their property with little to no TLC required.

Contains: Wild Bergamot, Flat Topped Aster, Beardtongue, Black Eyed Susan, Butterfly Weed, Evening Primrose, Fowl Bluegrass, New England Aster, Little Bluestem & Indiangrass.

6815 - DEER RESISTANT WILDFLOWER MIX

A mix of early flowering annuals and perennials.

Contains: Black Eyed Susan, Corn Poppy, Four O'Clocks, Foxglove, French Marigolds, Lance Leaf Coreopsis, Lemon Mint, Little Bluestem, Oriental Poppy, Perennial Lupines, Purple Coneflower, Side Oats Gramma, Sweet Alyssum.

6823 - BEE POLLINATOR MEADOW MIX

We've been losing our bees at an alarming rate and need to reverse the trend. Help by sowing this, beneficial mix! Blend of annuals and perennials

Contains: New England Aster, Black Eyed Susan, Borage, Butterfly Weed, Corn Poppy, Eastern Columbine, Forget-me-not, Perennial Gaillardia, Lance Leaf Coreopsis, Lemon Mint, Partridge Pea, Perennial Lupines, Purple Coneflower, Mignonette, White Clover, and Wild Bergamot.

6820 - HUMMINGBIRD MIX

Radiant blooms of bright red, violets and yellows to attract hummingbirds. Species in this mix average 70cm (30") garden height.

Contains: African Daisy, Bachelor Buttons, Black Eyed Susan, Calendula, Dwarf Coreopsis, Blue Flax, Four O Clocks, Double Gaillardia, Tall Gaillardia, Flanders Red Poppy, Perennial Lupines, Siberian Wallflower.

6825 - LOW GROWING MIX

A special use mix when you require flowers no taller than 40cm (16") height. Annual and perennials.

Contains: Alyssum Saxatile, African Daisy, Baby's Breath, Catchfly, Candytuft, Dwarf Coreopsis, Dwarf Coneflower, Five Spot, Forget-Me-Not, Mountain Phlox, Showy Evening Primrose, Oriental Poppy, Ozark Sundrop, Pinks, Prairie Coneflower, Wallflower.

6830 - OSC WILDFLOWER MIX

Flowering height averages 60-90cm (2-3'). Perennial types will bloom continually from the second season on. Many of the annuals will re-seed themselves. Contains: Baby's Breath, Bachelor Buttons, Black Eyed Susan, Cosmos, Calendula, Catchfly, Chrysanthemum, Lance Leaf Coreopsis, Plains Coreopsis, Scarlet Flax, Rocky Mountain Penstemon, Evening Scented Primrose, Prairie Coneflower, Purple Cornflower, Russell Lupines, Soapwort, Shasta Daisy, Shirley Poppy, Wallflower.



6825 - LOW GROWING MIX



6830 - OSC WILDFLOWER MIX

6840- SEMI SHADE WILDFLOWER MIX

Designed for areas that receive only 4-5 hours of filtered sunlight per day. Annuals and perennials. This mix is heavily concentrated in blues, violets, pinks and yellows.

Contains: Aquilegia, Cornflower, Candytuft, Catchfly, Dwarf Coreopsis, Forget-Me-Not, Ozark Sundrop, Shasta Daisy, Shirley Poppy, Sweet William, Viola, Five Spot, Purple Coneflower.



6820 - HUMMINGBIRD MIX



6840 - SEMI SHADE WILDFLOWER MIX

6850 - SIMCOE COUNTY MIX

Drought tolerant and performs well in less than ideal soil conditions.

Contains: New England Aster, Black Eyed Susan, Bonset, Canada Wild Rye, Annual Ryegrass, Wild Bergamot, Little Bluestem, Indiangrass.

Did you know...

My seed isn't coming up – Why?

Many perennial and native seeds require a long germination period under ideal conditions of the right light, moisture and temperature.

Many long lived, deep rooted perennials take the first year or more to develop these long roots systems at the expense of top growth making plants hard to see. A two year establishment is normal for many of these mixes

INDIVIDUAL WILDFLOWERS

6940 – NEW ENGLAND

ASTER (*Aster novae-angliae*)

2400 sds/g

Direct fall sowing is very effective.

This **Ontario native** is irresistible to songbirds and butterflies. Blooms August through October. Enjoys full sun to partial shade. Height 60-90cm (2-3').

6860 – BEARDTONGUE

(*Pentstemon digitalis*)

1,350 sds/g

Beardtongue is an **Ontario native**. Height 120cm (4'). Low clumps of dark green foliage and its bright flowers. Sow seed indoors March 1st. Germinate at 14C/55F for 20-25 days. Pure white clusters of tubular flowers bloom May to July.

6880 – BONESET

(*Eupatorium perfoliatum*)

6,340 sds/g

Direct fall sowing is very effective. Occurs naturally in low ground thickets, stream banks and moist meadows growing to 1.2m (4') tall. Produces flat topped clusters of 10-20 small white flowers July through September.

6910 – DWARF YELLOW PRAIRIE CONEFLOWER

(*Ratibida columnifera*)

1800 sds/g

Press seed into contact with the soil but do not cover as light aids germination. **Native through the plains, mid-west and Canada**. Colourful plants 1M (3') tall blooms summer through fall. Bright yellow reflexed petals with pronounced tubular centres. Flowers up to 7.5cm (3") across.

6900 – LANCE LEAVED COREOPSIS

(*Coreopsis lanceolata*)

440 sds/g

Long flowering perennial wildflower. Outdoors, sow seed mid May to early June and keep moist during the germination period. Thin to stand 30cm (1') apart. Divide plants every two to three years. Blooms June through fall.

An **Ontario native** plant that's a favourite of songbirds and butterflies and excellent for border or cutflowers. Brilliant yellow flowers bloom all summer long on 60cm (2') stems. Tough, long-lived, self-seeds very easily and tolerant of heat and drought.

6955 – OX EYE SUNFLOWER

(*Helianthus helianthoides*)

220 sds/g.

Direct sow in late fall or very early spring. Early flowering and loaded with single and some double yellow flowers July through September. Enjoys full morning sun and partial afternoon shade. Reaches 20-30cm (2-3') garden height. Divide every three to four years when plants become overcrowded.



6880 - BONESET



6910 - DWARF PRAIRIE
CONEFLOWER



6900 - LANCE LEAVED COREOPSIS



6940 - NEW ENGLAND ASTER



6955 - Helianthus
OX EYE SUNFLOWER



6860 - BEARDTONGUE

**ALL OUR SEEDS
ARE GMO FREE**



6875 - BLUE WILD INDIGO

6875 – BLUE WILD INDIGO*(Baptisa australis)*

48 sds/g

Outdoors sow seed in late fall or early spring. An **eastern North American native** that produces beautiful clusters of blue flowers May through June. Once used to make blue dye and as a tea for headaches. Grow in full sun or partial shade in a rich, well-drained soil.

Height 60-90cm (2-3').

6935 – JOE PYE WEED

4400 sds/g

(Eupatorium fistulosum)

Sow directly outdoors mid-October where it is to bloom. Slow growing requiring two years to flower. Another **Carolinian Canada species that's a butterfly and hummingbird favourite**. Tall, showy plants average 120cm (4') height and are loaded with fluffy, purplish-white blooms in late summer. Flowers have a sweet vanilla scent. A good wetland meadow plant, as it prefers moist soils.

6995 – WILD LUPINES*(Lupin perennis)*

45 sds/g

Outdoors, sow seed late fall for germination next spring.

Rare Ontario prairie native plant loaded with blue flowers tipped white early spring through summer. Enjoys full sun, tolerant of most soils. Matures to 60cm (2') garden height.



6935 - JOE PYE WEED

6987 – COMMON MILKWEED*(Asclepias syriaca)*

150 sds/g

Easy to grow perennial wildflower. Common Milkweed is the main food plant of the Monarch butterfly. Sow seed directly into the garden early fall. Prefers full sun in well drained soil. **Native wildflower**.

6985 – RED SWAMP MILKWEED*(Asclepias incarnata)*

1800 sds/g

Easy to grow perennial wildflower. Sow seed early March indoors for late summer flowering the following spring. Germinate at 20C/70F for 21 to 28 days. Direct fall sowing is also very effective. **Native to Southern Ontario**. Wetland plant pond edges & moist gardens. Full sun in poor, sandy soil. Height 30-60cm (1-2').

6960 – BLAZING STAR*(Liatris spicata)*

285 sds/g

Not a purple loosestrife! Perfect for beds, borders or rock gardens. Sow seed indoors March 1st. They prefer a cold treatment to improve germination. Place seed in planting tray, moisten and put in refrigerator or outside to freeze for 10 days. Bring indoors and place under lights at 20C/70F.

Rare Ontario Prairie native. Spectacular show of purple spikes July through September. Good frost and wind tolerance and an excellent dried or fresh flower. A butterfly favourite. Ht 60-90 cm. (2-3')



6995 - WILD LUPINES



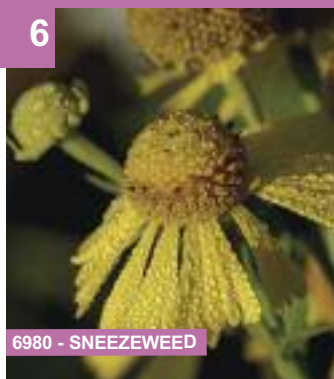
6960 - Liatris BLAZING STAR



6987 - COMMON MILKWEED



6985 - RED SWAMP MILKWEED



6980 - SNEEZEWEED

6980 – SNEEZEWEED*(Helenium autumnale)*

500 sds/g

With a name like sneezeweed its hard to become a best selling garden plant. It won't make you sneeze. This plant's unfortunate name came from a medicinal use by North American Indians. The crushed dried petals were used to combat hayfever. Outdoors start mid-May in the garden.

A **native Ontario** plant that prefers moist to wet soil conditions. It offers an abundance of yellow reflexed flowers with yellowish-green centres. These strong-stemmed flowers are excellent in bouquets. A late fall bloomer. Ht 60-120cm (2'-4").

6915 – EVENING SCENTED PRIMROSE*(Oenothera lamarackiana)*

1900 sds/g

Perennial for rockgardens and low borders. Sow seed directly outdoors mid May.

Ontario native. Bright yellow 2.5 to 5cm (1-2") cup-shaped flowers. The seeds attract small birds. Performs well in average to dry soil, full sun to partial shade. Compact plants average 30cm (1') height.

6975 – SHOWY TICK TREFOIL*(Desmodium canadense)*

155 sds/g

Sow seed directly outdoors mid May.

A **Carolinian Canada** plant adorned with purple tea-like flower July to September. Deer enjoy its tasty leaves while butterflies are attracted to the seeds. Full sun to partial shade. Height up to 2 m (6 and a half feet)



6915 – EVENING SCENTED PRIMROSE

6870 – BLUE VERVAIN*(Verbena hastata)*

3500 sds/g

Outdoors, sow seed in late fall or early spring. Indoors, sow seed March 1st. Nick or file the hard seed coat to improve germination.

An **Ontario** wetlands species, roadsides and ditches. Produces a colourful show of blue flower spikes July through September. Very fast growing and easily grown. Enjoys full sun in medium to moist soil.



6975 - SHOWY TICK TREFOIL



6870 - BLUE VERVAIN



8000 - BIG BLUESTEM



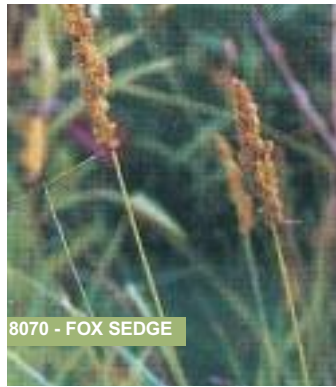
8035 - LITTLE BLUESTEM



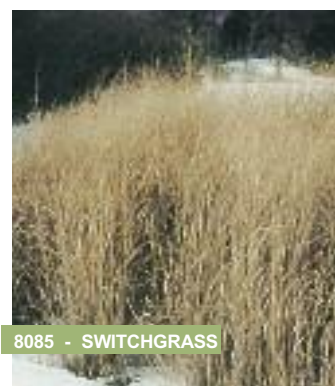
8045 - PRAIRIE DROP SEED



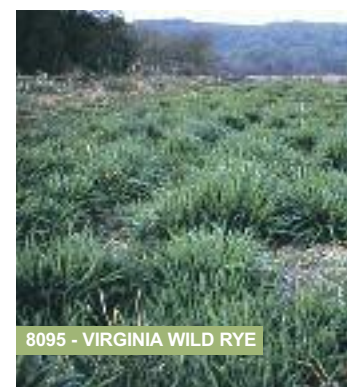
8090 - CANADA WILD RYE



8070 - FOX SEDGE



8085 - SWITCHGRASS



8095 - VIRGINIA WILD RYE

8000 – BIG BLUESTEM

(Andropogon gerardii)
The “King” of native grasses and the most prevalent and widely distributed of all prairie grasses. Growing 1 to 2M (3-6') tall in a wide range of soil conditions from wet, to poorly drained to hot, dry and open areas. In late August it produces its interesting flower heads, resembling turkey's feet. Lush green stems turn reddish-brown in fall.

8035 – LITTLE BLUESTEM

(Andropogon scoparius)
A clump forming, shortgrass that combines very well with wildflowers. Its blue and green summer hues turn a striking red in the fall. Silver-white seed heads. Grows best in well-drained, medium to dry soil. Height 60 m (2').

8005 – BLUE GRAMA

(Bouteloua gracillus)
A fine leaved, delicate bunch grass with pretty greyish purple flags on every stem. Often referred to as Buffalo Grass. Prefers full sun, in well-drained soil. Excellent in dried arrangements. Grows to 30cm (1') tall.

8045 – PRAIRIE DROPSEED

(Sporobolous heterolepis)
A magnificent fountain of emerald green leaves. A very distinctive border planting. Height 30-60cm (1-2').

8090 – CANADA WILD RYE

(Elymus canadensis)
Ontario native bunchgrass and extremely fast growing. Nurse crop for meadow plantings as it matures in the first to second year, long ahead of other longer lived grasses. Dried seed heads are attractive in arrangements or as mass plantings. Tolerant of a wide range of soil conditions. Ht 90 cm (3').

8095 – VIRGINIA WILD RYE

(Elymus virginicus)
A cool season Ontario woodland native adapted throughout Canada and the USA. Makes an excellent forage grass. Particularly suited to moist soils along streams, ponds and at the edge of woodland. Enjoys full sun to partial shade. Ht 30-60cm (1-2').

8030 – JUNE GRASS

(Koeleria cristata)
This rare species is Native to Walpole Island. A nice looking bunchgrass that is very drought tolerant. Showy white seed heads appear June to July. Grows readily from seed. Ht 60cm (2').

8085 – SWITCHGRASS

(Panicum virgatum)
This bunch forming grass carries attractive conical seed heads which turn a golden brown in fall. Grows to 1.5 m (4.5 ft) tall.

8065 – BEBBS SEDGE

(Carex bebbii)
Ideal for wet sandy shores, meadows, swales, ditches, stream banks, in open ground or clearings. Narrow leaves and slender seed heads bloom June through late August. Provides food and cover for smaller wildlife.

8070 – FOX SEDGE

(Carex vulpinoidea)
Wetland sedge, 60 cm tall by 60cm wide. In mid-summer the brownish yellow seed heads spray out to create a stunning effect. This is a perfect plant for areas too wet to mow but where a rich, green lawn like appearance is desired.

Place orders weekdays by calling your rep or calling our office at (519) 886-0557 or FAX to (519) 886- 0605. Office hours are 8:30 AM to 4:30 PM ET.

NATIVE GRASSES & MIXES



8145 - RURAL ONTARIO
ROADSIDE MIX

8145 – RURAL ONTARIO ROADSIDE MIX

Drought tolerant perennials and grasses. Contains: Little Bluestem, Indiangrass, Virginia Wild Rye, Canada Wild Rye, Black Eyed Susan, New England Aster, Showy Tick Trefoil, Bonset, Blue Vervain, Beard Tongue, Dense Blazing Star, Wild Bergamot

8135 – NATIVE PRAIRIE MEADOW MIX

A diverse mix of flowers and grasses to create "a native field of dreams" that requires no maintenance. Contains: Beard-tongue, Black Eyed Susan, Evening Primrose, Early Goldenrod, Fowl Bluegrass, Indiangrass, Little Bluestem, New England Aster, Showy Tick Trefoil, Switchgrass, White Vervain, Wild Bergamot.

125g pkg. Covers 45 m²

8250 – SHORELINE MIX

Contains: Sweet Flag, Purple Stemmed Aster, Spotted Joe Pye Weed, Swamp Milkweed, Virginia Wild Rye, Blue Vervain, Blunt Bloom Sedge, Fox Sedge, Green Bulrush.

8215 – CREEK BANK SEED MIX

Contains: Big Bluestem, Fox Sedge, Fowl Bluegrass, Fowl Manna Grass, New England Aster, Black Eyed Susan, Bottle Brush Grass.

Did you know...

Fox Sedge is a very important food source for wildlife.

Little Blue Stem roots can reach for water over 6 feet (2m) deep below soil surface.



8215 - CREEK BANK SEED MIX

8260 – VALLEYLAND MIX

Readily available, non-invasive upland grasses and legumes for use in semi-moist, hard to grow areas. Contains: Fox Sedge, Virginia Wild Rye, Fowl Manna Grass, Path Rush, Fowl Bluegrass.



8250 - SHORELINE MIX



Butterfly Habitat



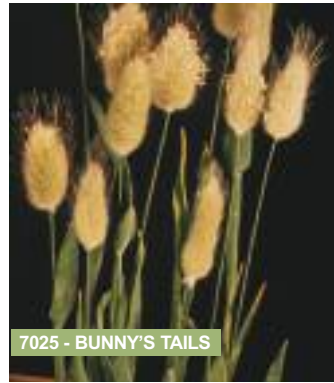
Pollinator Blends



7040 - PAMPUS PLUME



7010 - ANGEL HAIR



7025 - BUNNY'S TAILS



7015 - BLUE FESCUE

Growing ornamental grasses is the most popular & fastest spreading trend in gardening today.

7005 – ANNUAL MIX

Striking in the landscape and perfect for decorative bouquets, backgrounds or borders. Sow 4-6 weeks early indoors or direct sow mid May. Try some in this year's garden.

7025 – BUNNY'S TAILS

Laguris ovatis.

Hardy annual grass grows well in any soil. Soft, woolly seed heads look great in mixed bouquets. Direct garden sow early spring. Grows to 25cm (10") tall.

PAMPUS PLUME (PERENNIAL)

Cortaderia sellona

Easy to grow. Slow to germinate. Star indoors in late fall through February. Reaches full height in 4 years. In Zones 5 or colder, bring indoors for winter.

7040 – WHITE FEATHER

7045 – PINK FEATHER

7015 – BLUE FESCUE

Festuca glauca

Perennial. Full sun. Short mature height at 25cm (10"). Perhaps the best ornamental grasses for borders and edges. A contrasting texture in formal flower beds

7010 – ANGEL HAIR

A semi-hardy grass with glistening bristles of light coloured ponytails that dance in the breeze. Excellent for mass plantings or containers. Garden 45 cm (18").

7115 – ANNUAL RYEGRASS

Our favourite nurse crop. Thrives in poor soils & full sun. 500g covers 20m² (215ft²). Helps reduce erosion.

Native Grass & Flowers for every need. Want to transform your landscape to its naturalized form? Has your landscape architect specified a special seed mixture? OSC can help you! Please call us for a quote. Tel: 519-886-0557 eMail: seeds@oscseeds.com



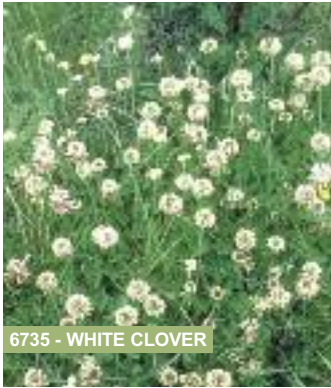
Wetland Rejuvenation



Upland Restoration

ALL OUR SEEDS ARE GMO FREE

LAWN ALTERNATIVES



6735 - WHITE CLOVER

6735 – WHITE CLOVER

Dwarf white flowering clover. Requires periodic mowing to maintain low growing habit. Do not fertilize or apply pesticides. Sow at 25g per 90 m² (1000 sq. ft.)

8320 – CROWN VETCH (Perennial)

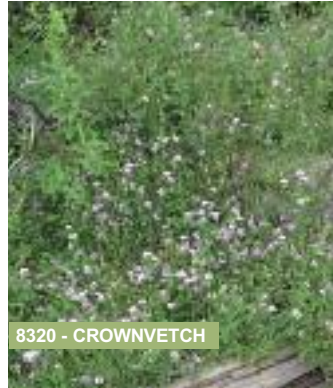
Never needs fertilizer or mowing. Crownvetch will not tolerate foot traffic. Plants grow to 35cm (18") tall. Crownvetch seed is slow and variable to germinate. Often six months or more are required for sowings to completely germinate. Requires annual ryegrass as a nurse crop. Sow at a rate of 500 g Crownvetch and 500 g annual ryegrass per 180 m² (2000 sq. ft.) Large areas should be sown at 22 kg/ha. (20 lbs/acre). One 'combo' is a package of 500g Crownvetch and 500g ryegrass.

8345 – WILD THYME LAWN

A Canada No.1 Ground Cover mix. Grows 10-15 cm (4-6") tall. Flowers mid to late summer. Sow a mix of seed and sand, mixed well. Keep sowings moist. Patience please. Takes at least 30 days to germinate. Repeat sowing the following year. Extremely small seed. Sow at 25 g per 150 m² (1500 sq. ft.).

Growing tips...

Ornamental grass seed needs to have close contact with soil for best germination. You will find a light rolling or tamping helps placement of the seed into the seedbed soil.



8320 - CROWN VETCH

8335 – MINI MOW MIX

A Canada No.1 Ground Cover. Needs to be cut only twice during the season to maintain its performance. Re-sow every couple of years to perpetuate diversity. Mix contains: White Yarrow, Birdsfoot Trefoil, White Clover, Perennial Alyssum, California Poppy. Sow at 500g/150m² (1lb/1500 sq.ft.)

8325 – FLOWERING LAWN

Drought resistant, hardy grasses/flowers. Contains: English Daisy, Thrift, White Clover, Birdsfoot Trefoil, Chamomile, Sheeps Fescue and Creeping Red Fescue. Matures to 35 cm. Sow at 1 kg/90 m² (2.2 lbs/1000 sq. ft.)

8340 – LOW MAINTENANCE OSC 'ECO LAWN' MIX

Drought resistant. Requires very little maintenance. Mowing is required if even lawn height is desired. Contains: Creeping Red Fescue, Ecostar Hard Fescue, Chewings Fescue, and Perennial Rye. Sow at 1.5 kg/61m² (3.3lbs/660sq.ft.)

8350 – XERISCAPING MIX

It never needs irrigation or reliable rain to germinate but thrives once established. Periodic mowing is essential. Avoid fertilization as this will inhibit the establishment of the clover. Benefits from aeration from time to time. Tolerant of moderate foot traffic. Mix contains: 25% Yarrow, 75% White Clover. Sow at 250g/90 m² (1/2 lb/1000 sq. ft.)



8345 - WILD THYME LAWN

8330 – HERBAL LAWN for SHADY AREAS

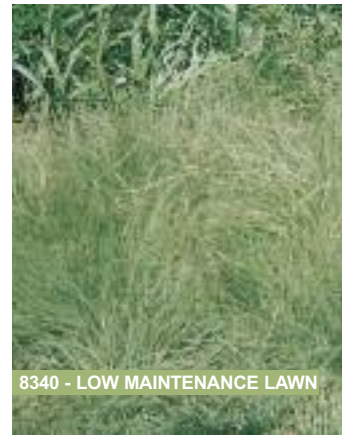
(Sweet Woodruff)
Very pleasant vanilla aroma. Great under trees. Best time to sow is mid May, late August or September directly outdoors. Slow to germinate--patience required. Height to 15 cm (6"). Sow at 50g/90 m² (1 oz./500 sq. ft.)
Limited supply.

8315 – BUFFALO GRASS

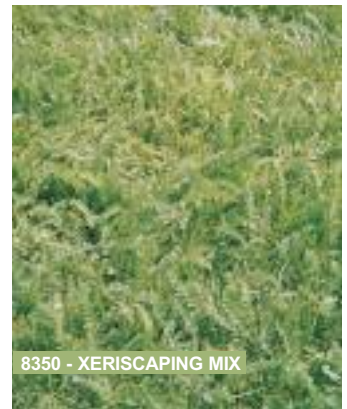
Prefers full sun. Has blue-green foliage making for an interesting lawn substitute. Resistant to insects & disease, requires little moisture once established. In winter, it turns tawny. Very drought resistant. Best time to sow is early May directly outdoors. Slow to germinate often taking 30 days. Mow to 15 cm (6") height. Patience required. Often requires several sowings to establish a permanent stand. Sow at 2.5kg/90 m² (5lb/1000 sq.ft.)



8335 - MINI MOW MIX



8340 - LOW MAINTENANCE LAWN



8350 - XERISCAPING MIX



8330 - HERBAL LAWN FOR SHADY AREAS