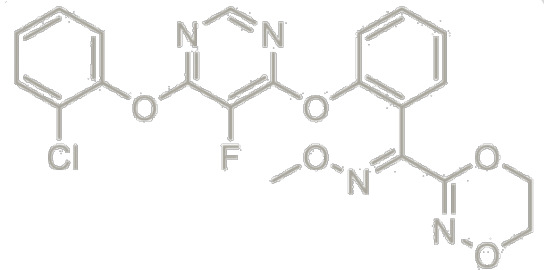


DISARM[®]

DISARM[®] is a group 11 fungicide containing Xylem-Pro Technology[®] specifically engineered to provide protection against many of the most destructive turf diseases. A broad spectrum strobilurin, DISARM delivers excellent results on major turf diseases including Anthracnose, Take-All patch, Snow Mould and even Dollar Spot!

DISARM provides a unique 'Halo of Protection' that is a result of quick plant uptake and even distribution within the plant. Add in its 15-minute rainfastness and you'll understand why DISARM is a standout solution amongst strobilurin fungicides



Halo of Protection: Xylem-Pro Technology[®]

- Xylem & translaminar movement
- Rainfast in 15 minutes
- Foliar & root uptake

**RAPID
MOBILITY**

- Take-All Patch
- Summer Patch
- Anthracnose
- Dollar Spot & more

**DISEASE
CONTROL**

- Greater root mass
- Consistent chlorophyll production

**PLANT
HEALTH**



Active Ingredient

Fluoxastrobin – 480 g ai/L

Fungicide Group

Group 11 – QoI

Formulation

Suspension Concentrate

Phytomobility

Xylem mobile; translaminar

Package Size

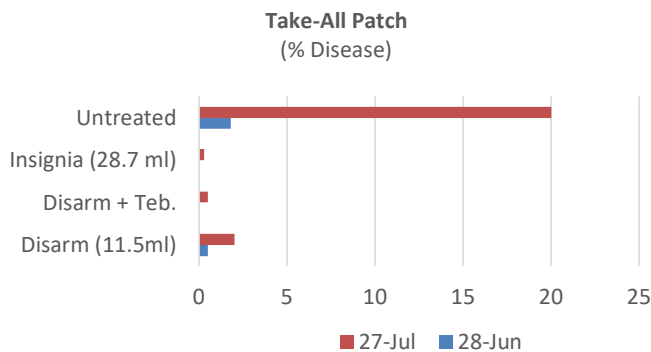
4 x 1 L

www.belchimturf.ca

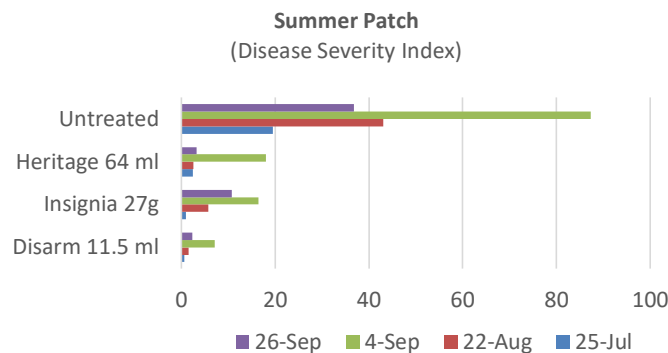
Grover	647 225 8035	paul.grotier@belchim.com
BJ	416 457 7785	billyjoe.carey@belchim.com
Big Bear	519 820 8929	barry.johnson@belchim.com



BELCHIM
TURF PROTECTION CANADA



Chicago District Golf Assoc. 2018, Townsend, Bieryth
Application Interval 28 days, initiated May 4th



Rutgers Univ. 2007, B. Clarke, Ph.D.
Application Interval 28 days

Disarm Label Summary

Disease Controlled	Rate (/100 m ²)	App Interval (Days)	Water Volume (/100 m ²)
Anthrachnose – foliar blight	5.8 – 11.5 ml	14-28	4-8 L
Anthrachnose – Basal rot	11.5 ml	14-21	4-8 L
Brown patch	5.8 – 11.5 ml	14-28	4-8 L
Dollar spot	5.0 – 11.5 ml	14-21	4-8 L
Summer patch	5.8 – 11.5 ml	14-28	12-16 L
Take-all patch	11.5 ml	28	12-16 L
Brown ring Patch (Waitea patch)	5.8 – 11.5 ml	14-21	4-8 L
Melting out & Leaf spot	5.8 – 11.5 ml	14-21	4-8 L
Pythium foliar blight	11.5 ml	7-14	4-8 L
Pink & Grey Snow mould	11.5 ml	n/a	4-8 L

Case Coverage

Labelled Rate (/100m ²)	1 jug (1 L)	1 case (4 x 1 L)
5 ml	4.94 ac	19.77 ac
5.8 ml	4.26 ac	17.0 ac
11.5 ml	2.15 ac	8.6 ac

Always read & follow label directions.
Disarm & Xylem-Pro are registered trademarks of FMC

